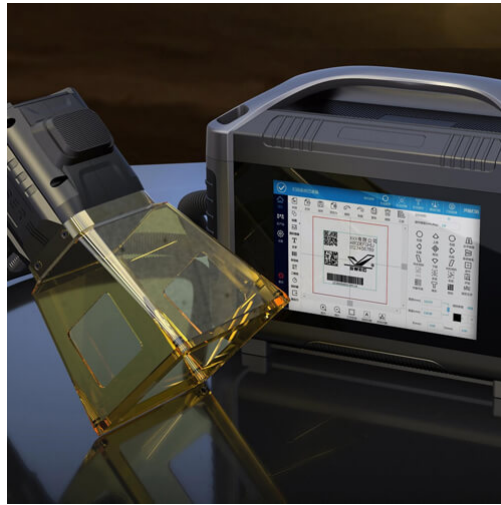


# SaberMark P-FML-30W

## Portable Fiber Marking Laser - Battery Powered

---



Meet the game-changer in laser engraving technology - our Lithium battery-powered portable fiber marking laser. Designed for the modern craftsman, artist, and industrial professional, this tool redefines the boundaries of creativity and precision. This portable handheld fiber marking laser is lightweight, easy to use and designed to be used on the fly where needed. No computer or programming is required. We bring you the future of laser engraving - a tool designed not just for today's needs but for tomorrow's innovations.

## Description

---

The flexible design function allows the laser to be placed on larger items or vertically or horizontally. Can be taken to remote locations both onsite and offsite, indoor or outdoor.

Laser power is available in 30w. The fiber marking engraving laser is built to serve with very little maintenance and zero consumables.

The fiber metal engraving laser is built to serve with very little maintenance and zero consumables. You can expect up to 100,000 working hours on this machine!

### Power Meets Portability

Say goodbye to cords and stationary workspaces. Our Portable FiberMark Laser is a handheld laser marking machine, powered by a robust Lithium battery, offers unmatched freedom. Whether in the workshop, at a client's site, or in the great outdoors, your imagination is the only limit.

## Precision at the Speed of Light

Equipped with cutting-edge fiber laser technology, our device delivers crisp, clear, and permanent markings on a variety of materials. From metals to plastics, and even leather, experience precision that rivals the most advanced engravers on the market.

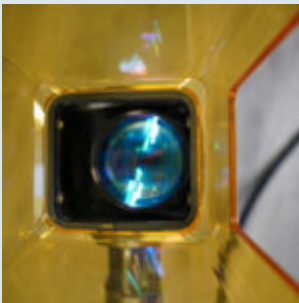
## Product Feature

---



### **Touch screen**

Linux based software with an easy to use interface utilizing an 8" touch screen.



### **30W Max Photonics laser source**

Long lasting quality power source which should last you up to 100,000 hours.



### **110x110mm / 4.33x4.33" working area**

Big enough to mark on most items!

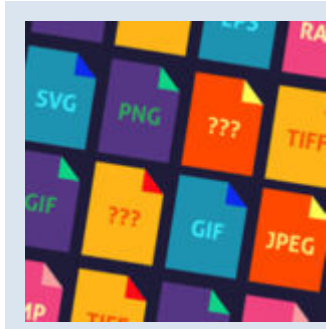


### **Detachable Lithium Battery 21.6V 10A 216Wh all**

Sets you up for a quick battery swap when you are out on the field or under some time pressure. Allows for up to 6 hours of continuous operation



**Very compact, light and portable**  
 310\*180\*235mm / 12.20×7.08×9.25”  
 6.5Kg/14.3Lbs



**Accepted file formats**  
 BMP,DXF,HPGL,JPEG,PLT

## Physical Features

Specification	MM	INCH
Marking Area	110x110mm	4.33x4.33”
Marking Area (Optional)	N/A	N/A
Horizontal Processing Envelope	Max 110x100mm	Max 3.93x4.33”
Fume Port Size	N/A	N/A
Fume Extractor CFM	N/A	N/A
Machine Footprint	310*180*235mm	12.20*7.08*9.25”
Hand wand size	255x96.5x240mm	10.03x3.79x9.44”
Net Weight	6.5kg	6.5kg
Gross Weight	7kg	7kg
Package Size	520x420x310mm	20.47x16.53x12.20”

## Power

Specification	MM	INCH
Voltage	110v	110v

Specification	MM	INCH
Optional Voltage	N/A	N/A
Power Requirement	400W	400W

## Laser Power Source

---

Specification	MM	INCH
Frequency Range 1-600khz	MOPA LP	MOPA LP
Laser Classification	Class 4 laser products, as defined in International Standard IEC 60825-1	Class 4 laser products, as defined in International Standard IEC 60825-1

## Laser Power Specifications

---

Specification	MM	INCH
Laser Power	30W	30W
Wavelength	1064nm	1064nm

## Computer Software

---

Specification	MM	INCH
Recommended	Windows	Windows

## Controller Interface

---

Specification	MM	INCH
Linux	Built In Software	Built In Software

## Computer

---

Specification	MM	INCH
Accepted File Formats	BMP, DXF, HPGL, JPEG, PLT	BMP, DXF, HPGL, JPEG, PLT
Inputs for touchscreen PC	USB	USB

Specification	MM	INCH
Wifi	No	No
Bar Coding Capability	CODE39, CODE128, CODE126, QR	CODE39, CODE128, CODE126, QR

## Performance

---

Specification	MM	INCH
Positioning Accuracy	0.005mm	0.0001"
Max Scanning Precision	0.005mm	0.0001"
AutoFocus	No	No
Red Dot Positioning	Yes	Yes
Scan Speed	7000mm/s	275.59"/s
Minimum Font Size	1mm	0.03"